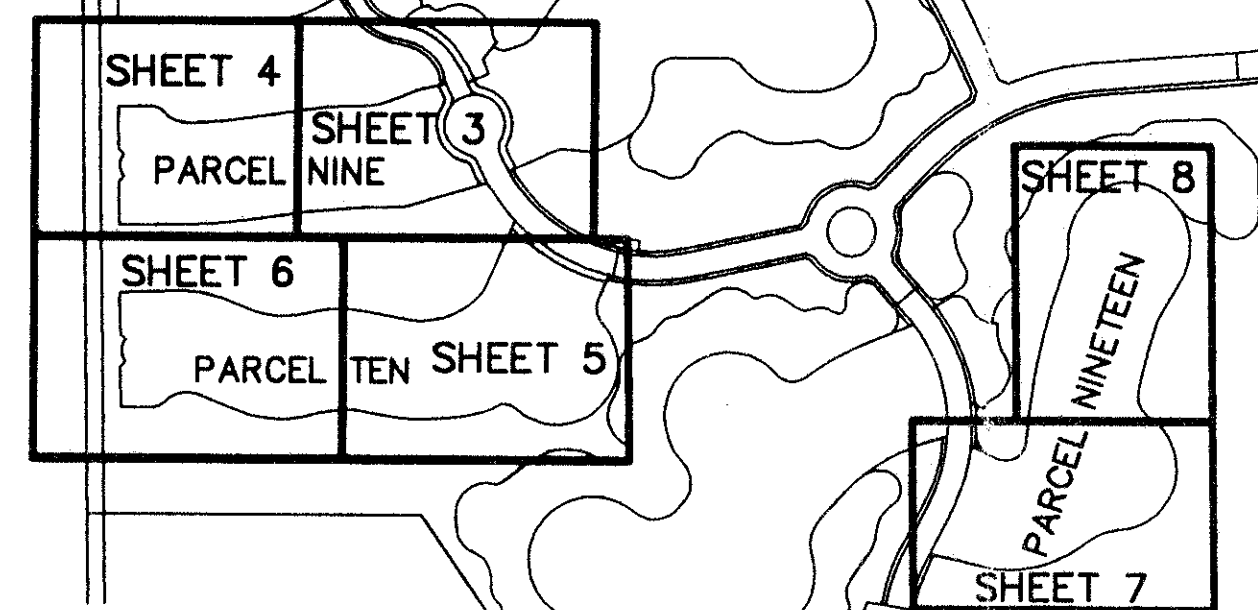


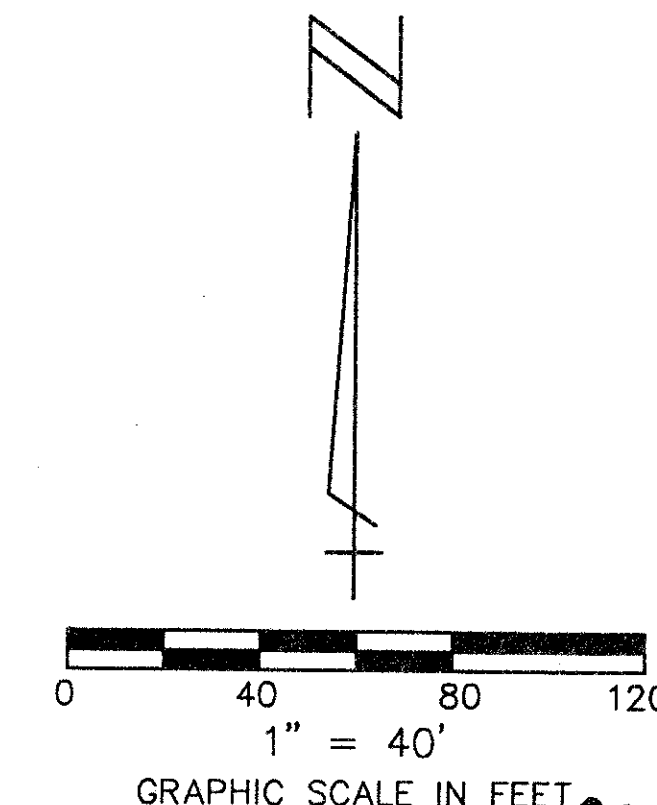
STATE OF FLORIDA  
COUNTY OF PALM BEACH  
THIS PLAT WAS FILED FOR  
RECORD \_\_\_\_\_ DAY OF \_\_\_\_\_  
AD, 1996 AND DULY RECORDED  
IN PLAT BOOK \_\_\_\_\_ ON PAGES  
\_\_\_\_\_ AND \_\_\_\_\_  
DOROTHY H. WILKEN, CLERK  
BY: \_\_\_\_\_, D.C.

# ADDISON RESERVE PARCELS NINE, TEN & NINETEEN

PART OF GLENEAGLES/POLO CLUB WEST P.U.D.  
BEING A REPLAT OF TRACT 9, TRACT 10 AND TRACT 19,  
"ADDISON RESERVE PLAT THREE"  
(P.B. 78, PGS. 5 - 12)  
SITUATE IN SECTION 28, TOWNSHIP 46 SOUTH, RANGE 42 EAST  
PALM BEACH COUNTY, FLORIDA  
AUGUST, 1996 SHEET 6 OF 8

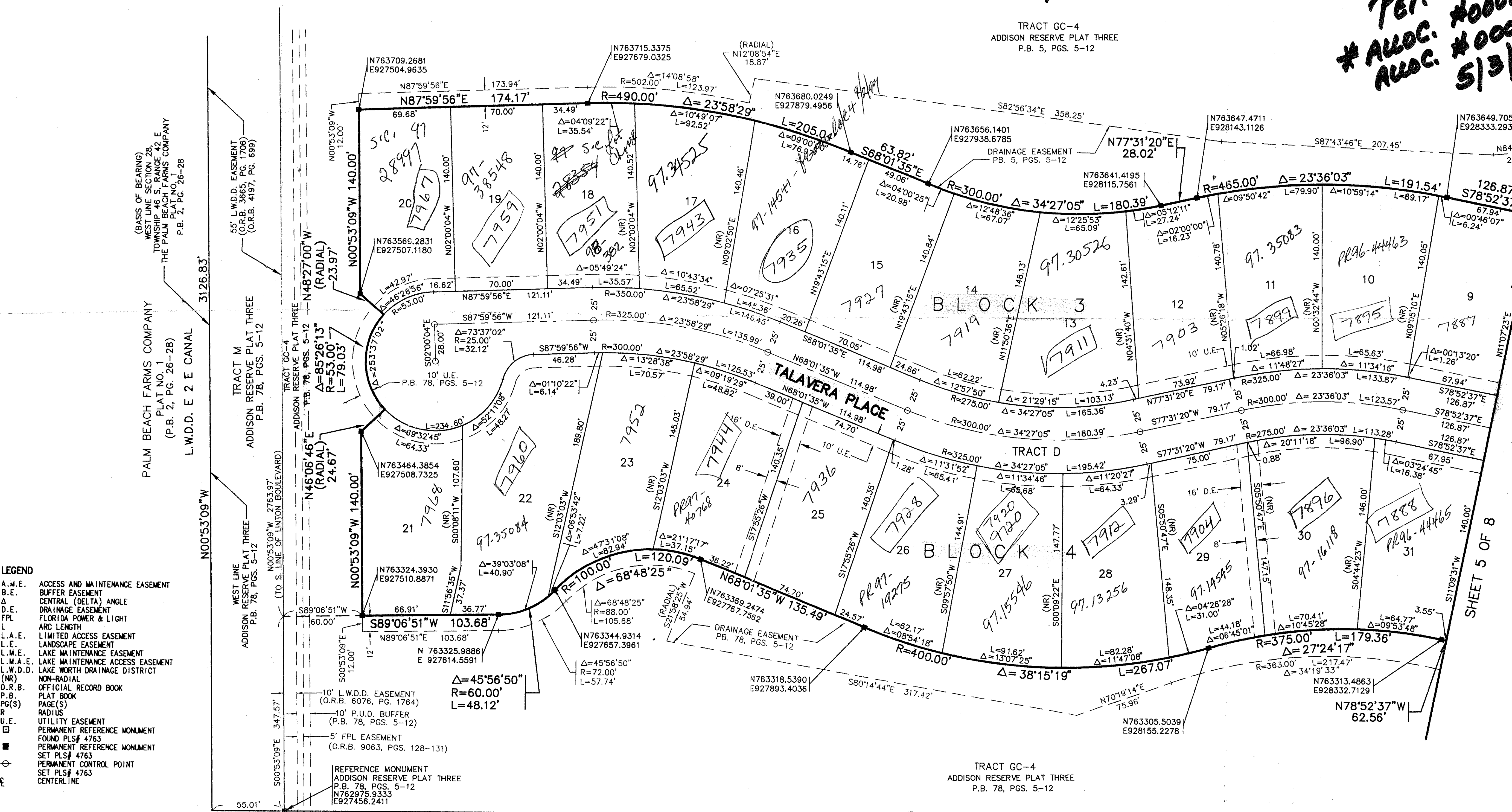


SHEET LOCATION MAP  
NOT TO SCALE



*PACCEL 10*

*PET. 80-215  
\* ALLOC. #0002. PAR. 9+10  
ALLOC. #0001. PAR. 19  
5/3/3/K*



- LEGEND**
- A.M.E. ACCESS AND MAINTENANCE EASEMENT
  - B.E. BUFFER EASEMENT
  - Δ CENTRAL (DELTA) ANGLE
  - D.E. DRAINAGE EASEMENT
  - FPL FLORIDA POWER & LIGHT
  - L ARC LENGTH
  - L.A.E. LIMITED ACCESS EASEMENT
  - L.E. LANDSCAPE EASEMENT
  - L.M.E. LAKE MAINTENANCE EASEMENT
  - L.M.A.E. LAKE MAINTENANCE ACCESS EASEMENT
  - L.W.D.D. LAKE WORTH DRAINAGE DISTRICT
  - (NR) NON-RADIAL
  - O.R.B. OFFICIAL RECORD BOOK
  - P.B. PLAT BOOK
  - PG(S) PAGE(S)
  - R RADIUS
  - U.E. UTILITY EASEMENT
  - PERMANENT REFERENCE MONUMENT FOUND PLS# 4763
  - PERMANENT REFERENCE MONUMENT SET PLS# 4763
  - PERMANENT CONTROL POINT SET PLS# 4763
  - ⊙ CENTERLINE

SUBDIVISION \* ADDISON RESERVE  
BOOK 76 PAGE 142  
FLOOD MAP # 2154  
ZONING RT5  
QUAD # 52  
SE 80-215  
ZIP CODE 33446  
PUD NAME ADDISON RESERVE

*0230-022*

*78/142*

REV. 9-18-96  
CAD FILE:  
TWKCADDI\ADDIRP18

SCALE:  
1" = 40'

P.A. NO.:  
94182.09

DATE:  
AUGUST 1996

DRAWING NO.  
46-42-28-105

**MOCK ROOS**  
ENGINEERS SURVEYORS PLANNERS

5720 Corporate Way, West Palm Beach, Florida 33407  
(407) 683-3113, fax 478-7248

ADDISON RESERVE  
PARCELS NINE, TEN & NINETEEN  
PART OF GLENEAGLES/POLO CLUB WEST P.U.D.  
BEING A REPLAT OF TRACT 9, TRACT 10 AND TRACT 19,  
"ADDISON RESERVE PLAT THREE"  
(P.B. 78, PGS. 5 - 12)  
SITUATE IN SECTION 28, TOWNSHIP 46 SOUTH, RANGE 42 EAST  
PALM BEACH COUNTY, FLORIDA

SHEET 6 OF 8